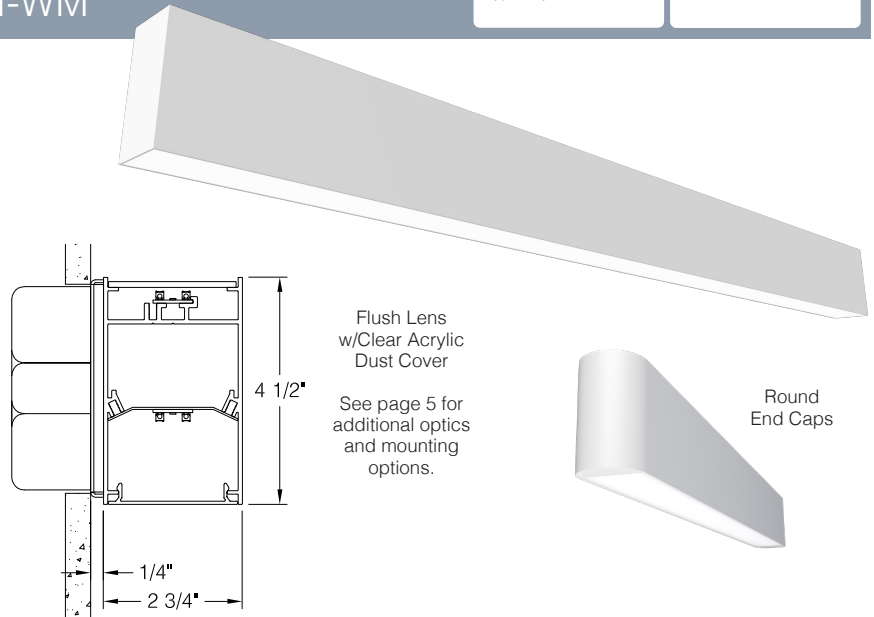


Date	Notes
Project	
Type/Qty	

## Features

- Extruded aluminum housing w/flat or round end caps.
- LED optimized optics for smooth, efficient illumination.
- Individual fixtures, continuous rows or custom patterns.
- Programmable driver for custom lumen packages.
- 0-10V dimming to 1% standard. Dim-to-off available.
- DMX, Lutron and DALI protocols also available.
- Sensor Ready for wireless Smart Lighting Solutions.
- 80/90CRI, Tunable White, RGBW & RGBWW.
- Advanced Color (RGBW) w/pixel control to 5".
- Bios SkyBlue™ circadian solutions available.
- DLC V5.1 Standard** Listed up to 122 LPW.
- Declare Red List Approved.**



## Ordering Guide

Declare. BAA



MODEL	OPTICS	LED <sup>1</sup>	LUMENS <sup>2</sup>	LENGTH	MOUNTING <sup>4</sup>	FINISH	OPTIONS
<b>PRFL-24-DI</b>					<b>WM</b>		
Profile 24 Direct/Indirect	<p><b>DIRECT LENS</b></p> <p>FL = Flush Opal Acrylic, snap-in <b>Standard</b></p> <p>DL = 1" Drop Opal Acrylic (snap-in)</p> <p>SCB = Cross Baffle w/acrylic overlay</p> <p><b>INDIRECT LENS</b></p> <p>CA = Clear Acrylic <b>Standard</b></p> <p>FL = Flush Opal Acrylic (snap-in)</p> <p>SI = Satin Ice Acrylic (lay-in)</p> <p>AS = Asymmetric (lay-in)</p> <p>CM = Collimating (lay-in)</p> <p>BW = Batwing (lay-in)</p> <p><b>BLACK OUT LENS</b></p> <p>BK = Black Out Lens (20LPW maximum)</p>	<p><b>STATIC WHITE</b></p> <p>27 = 2700K 30 = 3000K 35 = 3500K 40 = 4000K 50 = 5000K</p> <p><b>BIOS SkyBlue</b></p> <p>Spectrally optimized circadian solutions.</p> <p><b>TUNABLE WHITE</b></p> <p>(2700K-6500K)</p> <p>2DIM10 = for 0-10V 2DMX = for DMX 2ESN = for Philips 2CAS = for Casambi 2LUT = for Lutron</p> <p><b>DIM-TO-WARM</b></p> <p>(2700K-6500K)</p> <p>DTW = Dim-to-Warm</p> <p><b>RGB + WHITE</b></p> <p>RGB = RGB RGBW = RGBW RGBWW = RGBWW</p> <p><b>ADVANCED COLOR</b></p> <p>125mm incremental pixel color control for chase and animated effects.</p>	<p>LO = 1169/ft (10W/ft, 117LPW)</p> <p>SO = 1557/ft (13W/ft, 117LPW)</p> <p>HO = 1948/ft (17W/ft, 117LPW)</p> <p><b>DLC V5.1<sup>3</sup></b></p> <p>SO = 1590/ft (13W/ft, 122LPW)</p> <p><b>CUSTOM LUMENS</b></p> <p>For custom lumens please specify &lt; HO.</p>	<p>2 = 2 ft</p> <p>3 = 3 ft</p> <p>4 = 4 ft</p> <p>5 = 5 ft</p> <p>6 = 6 ft</p> <p>7 = 7 ft</p> <p>8 = 8 ft</p> <p>For other enter row length (e.g. 48 = 48 ft)</p>	<p>WM = Wall Mount</p>	<p>W = White</p> <p>CC = Custom Color</p> <p>AMW = Anti-Microbial White</p>	<p><b>DIMMING DRIVERS</b></p> <p>DIM10 = 0-10V (1%) - <b>Standard</b></p> <p>DTO = 0-10V (Dim-to-Off)</p> <p>DIMST = 0-10V Step Dimming</p> <p>347 = 0-10V (347V)</p> <p>DIMSR = DALI Sensor Ready (5.0%)</p> <p>DALI = DALI (5.0%)</p> <p>DMX = DMX</p> <p><b>LUTRON™ DIMMING DRIVERS</b></p> <p>LDE1 = Hi-Lume 1% EcoSystem</p> <p>LD2 = Digital 1% (DALI-2)</p> <p>L3DA3W = Hi-Lume 1% 3-Wire</p> <p><b>SENSORS &amp; CONTROLS<sup>5</sup></b></p> <p><b>EMERGENCY BATTERY<sup>6</sup></b></p> <p>EPC4 = 4W Integral Battery</p> <p>EPC6 = 6.5W Integral Battery</p> <p>EPC10 = 10W Integral Battery</p> <p>EPC12 = 12W Integral Battery</p> <p><b>WIRING &amp; OTHER</b></p> <p>EMC = Emergency Circuit</p> <p>GTD = Generator Transfer Device</p> <p>FWH = Flexible Wiring Harness</p> <p>DWH = DMX Wiring Harness</p> <p>RE = Round End Caps</p>

<sup>1</sup>All LED, BIOS, Tunable White, DTW, and RGB/W options and Ordering Codes page 2.

<sup>2</sup>Lumens at 80CRI, 3500K, FL/CA lens. Photometry page 4. Custom lumens may be specified at an level below HO.

<sup>3</sup>DLC options are limited to FL/CA optics, static white 35/40K CCT @ 80CRI, SO lumens, all mounting, all finishes, and all options excluding DIMST.

<sup>4</sup>See page 4 for mounting option details.

<sup>5</sup>All Sensor & Control options page 2.

<sup>6</sup>EPC6 is standard unless otherwise specified. EPC not for DMX drivers.

**BAA** letter of compliance available at [www.dayolite.com](http://www.dayolite.com). Please consult factory for **BABAA** requests.

## LED, BIOS, Sensor & Control Ordering Codes

### LED

#### Static White

30 = 3000K 80 CRI  
 35 = 3500K 80 CRI  
 40 = 4000K 80 CRI  
 50 = 5000K 80 CRI

927 = 2700K 90 CRI  
 930 = 3000K 90 CRI  
 935 = 3500K 90 CRI  
 940 = 4000K 90 CRI

#### Tunable White<sup>1</sup> (2700K-6500K)

2DIM10 = 0-10V 80 CRI  
 2DMX = DMX 80 CRI  
 2CAS = Casambi Wireless 80 CRI  
 2ESN = Philips EasySense 80 CRI  
 2LUT = Lutron (LD2) 80 CRI

92DIM10 = 0-10V 90 CRI  
 92DMX = DMX 90 CRI  
 92CAS = Casambi Wireless 90 CRI  
 92ESN = Philips EasySense 90 CRI  
 92LUT = Lutron (LD2) 90 CRI

#### Dim-to-Warm<sup>2</sup>

DTW = 6500K-2700K 80 CRI  
 9DTW = 6500K-2700K 90 CRI

#### RGB/W<sup>3</sup>

RGB = RGB only  
 RGB27 = RGB w/2700K  
 RGB30 = RGB w/3000K  
 RGB35 = RGB W/3500K  
 RGB40 = RGB w/4000K  
 RGB50 = RGB w/5000K  
 RGBWW = RGB w/2700K-6500K

#### Single Color<sup>4</sup>

RED = Red  
 BLU = Blue  
 GRN = Green  
 AMB = Amber

#### Advanced Color<sup>5</sup>

Advanced Color options combine RGB or RGBW with multi-pixel control for advanced chases, animated visual effects and other programmable scenes with 125mm pixel granularity.

ACRGB = RGB only  
 AC27 = RGB w/2700K  
 AC30 = RGB w/3000K  
 AC40 = RGB w/4000K

### BIOS SkyBlue

BIOS SkyBlue biological technology brings the benefits of blue skies inside. BIOS SkyBlue is the only spectrally optimized circadian solution to target the region that drives wellness benefits including: increased alertness, enhanced productivity, better mood, and better sleep. More information may be found at [www.bioslighting.com](http://www.bioslighting.com) or by contacting Day-O-Lite directly. All options for 0-10V control.

#### BIOS Biological Static

For daytime applications. BIOS Static Biological LED features key BIOS SkyBlue (490nm) for maximum daytime circadian impact.

B30 = 3000K  
 B35 = 3500K  
 B40 = 4000K

#### BIOS Biological Dynamic White

Designed to transition from daytime to evening in a dim-to-warm protocol. The daytime CCT includes full BIOS SkyBlue (490nm) for maximum daytime circadian impact, while the evening spectrum removes BIOS SkyBlue for minimal circadian stimulus after hours.

B30D = 3000K-2700K  
 B35D = 3500K-3000K  
 B40D = 4000K-3500K

#### BIOS Biological Tunable White

Designed to transition from daytime to evening in a tunable white protocol. The daytime CCT includes full BIOS SkyBlue (490nm) for maximum daytime circadian impact, while the evening spectrum removes BIOS SkyBlue for minimal circadian stimulus after hours.

B30T = 3000K-2700K  
 B35T = 3500K-2700K  
 B40T = 4000K-2700K

<sup>1</sup>Tunable white may be controlled by a number of dimming protocols as shown. The 2ESN Philips EasySense option includes daylight and occupancy sensing plus tunable white control through wireless switches (by others; i.e. Philips, Illumra).

<sup>2</sup>Dim-to-Warm mimics incandescent dimming by warming the CCT from 6500K to 2700K as light levels are dimmed. Simply lower the intensity and CCT changes from high to low. Compatible with most 0-10V dimmers (by others). Ideal for hospitality, restaurants and living facilities.

<sup>3</sup>All RGB, RGBW and RGBWW options for DMX control (by others). 80 CRI standard.

<sup>4</sup>Single colors are constant voltage LEDs. Dimming requires ELV controller (by others).

<sup>5</sup>White limited to 100L/ft.

### Sensors & Controls

#### Sensors\*

AVO = Avi-On Occ/Day  
 AVM = Avi-On Occ (Microwave)  
 BNV = BubblyNet Occ/Day  
 ENC = Encelium Occ/Day  
 ENL = EnLighted Occ/Day/Temp  
 LEG = Legrand Occ/Day  
 ANW = Lutron Athena Occ/Day  
 VIVE = Lutron Vive Occ/Day  
 NLT = Acuity nLight Occ/Day  
 NXC = Current NX Occ/Day  
 ESN = Philips EasySense Occ/Day  
 WWL = Cooper WaveLinX Occ/Day

#### Wireless Control\*

CAS = Casambi

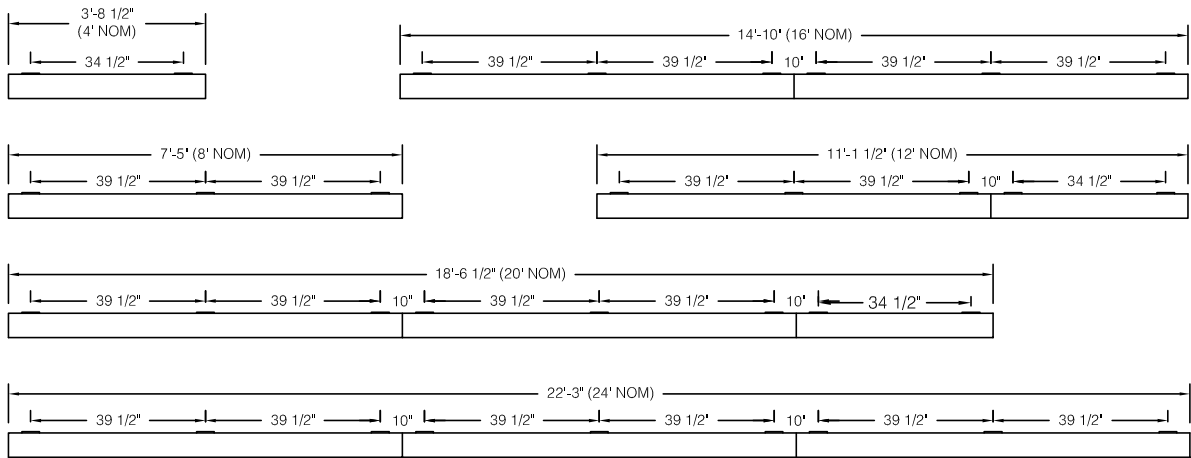
\*Sensors and control options to be commissioned wirelessly in the field by qualified controls personnel with applicable apps (by others).

## Individual Fixtures & Continuous Rows

NOMINAL LENGTH	ACTUAL LENGTH	WALL BRKTS.
4'	44 1/2"	2
8'	89"	3
12'	133 1/2"	5
16'	178"	8
20'	222 1/2"	8
24'	267"	9

Individual fixtures and rows are continuously illuminated and joined with included aligner brackets and hardware. Power feed locations and mounting locations are shown below.

Continuous rows longer than 8' and patterns, including EPC/EMC and sensor locations must be approved prior to manufacturing.

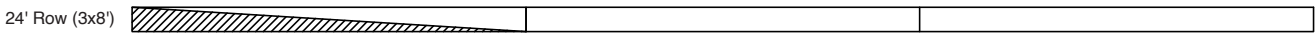


## Emergency & Sensor Locations

EPC will control entire length of individual fixtures. Individual fixtures of differing lengths will deliver the same lumens under EPC power (a 4' fixture will deliver the same total lumens over half the length of an 8' fixture). EMC controlled individual fixtures will deliver lumens per foot as originally specified, unless dimmed at time of power loss. Consult factory for EMC dimming overRide device.



For individual fixtures to 8' EPC/EMC will power entire fixture.



For continuous rows longer than 8' one EPC/EMC will be located in the feed section (end-left) of the row as shown below.



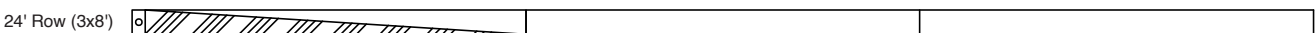
If two EPC/EMC's are required their default locations will be in the feed section (end-left) and last section (end-right) as below.



Custom placement of one or more EPC/EMC's must be clearly identified during ordering.

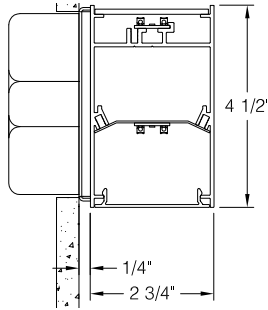


SENSORS (Integral) for individual fixtures will control entire length of fixture and will be located on feed end of fixture.

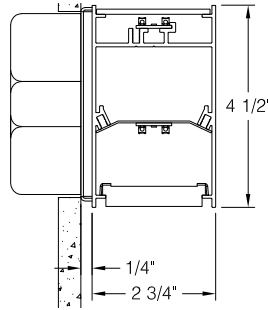


SENSORS for rows by default will control the feed section (end-left) of the row. Sensors can control more than an 8' section within a row. Consult factory for sensor/section options, or for multiple sensors in a continuous row.

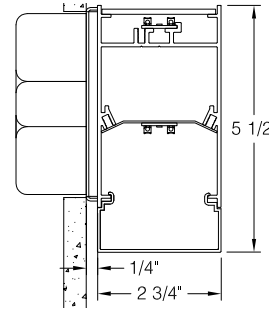
### Mounting & Optics Details



FL Lens Direct  
CA Lens Indirect

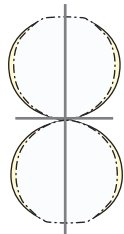


SCB Lens Direct  
CA Lens Indirect



DL Lens Direct (1" Drop)  
CA Lens Indirect

### Photometry



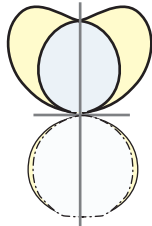
Flush Lens

PRFL-24-DI-FL/CA-35-**LO**-4  
Flush Lens Direct w/Clear  
Acrylic Dust Covers  
  
3500K CCT  
WATTS: 40  
LUMENS: 4677  
LPW: 117

PRFL-24-DI-FL/CA-35-**SO**-4  
Flush Lens Direct w/Clear  
Acrylic Dust Covers  
  
3500K CCT  
WATTS: 53  
LUMENS: 6228  
LPW: 117

PRFL-24-DI-FL/CA-35-**HO**-4  
Flush Lens Direct w/Clear  
Acrylic Dust Covers  
  
3500K CCT  
WATTS: 67  
LUMENS: 7790  
LPW: 117

PRFL-24-DI-FL/CA-35-**S3D**-4  
**DLC** V5.1 Standard  
  
3500K CCT  
WATTS: 52  
LUMENS: 6360  
LPW: 122  
  
PRFL-24-DI-F/CA-40-**S4D**-4  
**DLC** V5.1 Standard  
  
4000K CCT  
WATTS: 52  
LUMENS: 6370  
LPW: 122

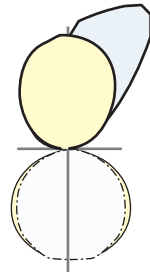


Batwing Lens

PRFL-24-DI-FL/BW-35-**LO**-4  
Flush Lens Direct  
Batwing Lens Indirect  
  
3500K CCT  
WATTS: 40  
LUMENS: 44192  
LPW: 114

PRFL-24-DI-FL/BW-35-**SO**-4  
Flush Lens Direct  
Batwing Lens Indirect  
  
3500K CCT  
WATTS: 53  
LUMENS: 5590  
LPW: 114

PRFL-24-DI-FL/BW-35-**HO**-4  
Flush Lens Direct  
Batwing Lens Indirect  
  
3500K CCT  
WATTS: 67  
LUMENS: 6988  
LPW: 110

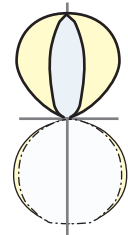


Asymmetrical Lens

PRFL-24-DI-FL/AS-35-**LO**-4  
Flush Lens Direct  
Asymmetrical Indirect  
  
3500K CCT  
WATTS: 40  
LUMENS: 4335  
LPW: 117

PRFL-24-DI-FL/AS-35-**SO**-4  
Flush Lens Direct  
Asymmetrical Indirect  
  
3500K CCT  
WATTS: 53  
LUMENS: 5780  
LPW: 117

PRFL-24-DI-FL/AS-35-**HO**-4  
Flush Lens Direct  
Asymmetrical Indirect  
  
3500K CCT  
WATTS: 67  
LUMENS: 7225  
LPW: 114



Collimating Lens

PRFL-24-DI-FL/CM-35-**LO**-4  
Flush Lens Direct  
Collimating Lens Indirect  
  
3500K CCT  
WATTS: 40  
LUMENS: 4404  
LPW: 120

PRFL-24-DI-FL/CM-35-**SO**-4  
Flush Lens Direct  
Collimating Lens Indirect  
  
3500K CCT  
WATTS: 53  
LUMENS: 5872  
LPW: 119

PRFL-24-DI-FL/CM-35-**HO**-4  
Flush Lens Direct  
Collimating Lens Indirect  
  
3500K CCT  
WATTS: 67  
LUMENS: 7340  
LPW: 116

3500K @ 80CRI, 4', 43% Direct, 57% Indirect Distribution, FL/CA lens.

Use the following multipliers for other CCTs: 2700K x 0.96, 3000K x 0.98, 4000K x 1.02, 5000K x 1.03. IES files @ [www.dayolite.com](http://www.dayolite.com)

## Specifications

**CONSTRUCTION** Extruded aluminum housing. 20 gauge cold rolled steel internal components.

**REFLECTOR** Die-formed steel finished in highly reflective baked white enamel with pre-finished reflective LED tray.

**OPTICS:** Direct opal acrylic Flush lens is standard. 1" acrylic Drop lens, Steel Cross Baffle with acrylic overlay optional. Indirect Clear acrylic dust covers standard, Flush lens, Satin Ice, Asymmetrical, Batwing, Collimating and Black Out lenses available.

**LED** Static white LED modules in 27/30/35/40 & 50K CCT, 80/90CRI. Lumen maintenance minimum  $L_{70}=50,000$  hours. 3 SDCM color consistency. BIOS SkyBlue, RGB, RGBW and Tunable White and Advanced Color options available.

**DRIVER** Standard driver is Class 2 AOC 0-10V to 1%, 120/277V input, PF > 90%, THD < 20 @ 120V. Additional dimming protocols available. All drivers prewired from factory for connection to control system (by others). Field replaceable.

**MOUNTING:** Standard installation is wall mount with included mounting brackets and hardware. Requires single-gang j-box supplied by others.

**FINISH** Housing and components finished in baked white enamel.

**CERTIFICATION:** cETLus listed conforming to UL STD. 1598 and certified to CSA STD C22.2 NO. 250.0. Suitable for dry & damp locations. Union Made in the United States of America. I.B.E.W. RoHS and BAA compliant; contact factory for any BABAA requests. DLC V5.1 Standard Listed. Declare Red List Approved.

**LEGAL:** Day-O-Lite, a division of SCW Corporation. All rights reserved. The Day-O-Lite logo is a registered trademark of SCW Corporation. Day-O-Lite reserves the right to change specifications without notice for product improvement.

**WEIGHT:** 12 lbs. @ 4', 24 lbs. @ 8'.